

THE GREAT SOUTH WEST INVESTMENT OPPORTUNITIES 2025

A REGION OF INNOVATION, SECURITY,
AND SUSTAINABLE GROWTH

Great South West





A REGION OF OPPORTUNITY AND GROWTH

FOREWORD

IF YOU'RE LOOKING TO GROW YOUR PORTFOLIO, EXPAND YOUR BUSINESS, OR SEIZE HIGH-VALUE INVESTMENT OPPORTUNITIES, YOU'VE COME TO THE RIGHT PLACE.

And here's the best part — you won't just make money here, you'll enjoy the ride. The South West offers not only unparalleled commercial potential, but also an exceptional quality of life that few other locations can match.

This brochure highlights the scale of opportunity across our region. But we're not just thinking about today. We have a long-term vision that stretches a decade ahead, ensuring investors can add value beyond the typical five-year business plan.

YOUR CHANCE TO PLAY A ROLE IN THE UK'S NET ZERO TRANSFORMATION

Take our clean energy opportunity as an example. Clean energy isn't a challenge here — it's our

advantage. We have a head start in building the UK's energy future. Hinkley Point C, the largest infrastructure project in Europe, is injecting £1.5bn into the economy annually during its construction phase. But that's just the beginning.

We're shaping the future of nuclear with a specialist skills hub, ensuring we have the expertise to deliver both large and small-scale reactors. Our contractors are already embedded in Sizewell C's procurement team, proving our national significance in this sector. Once operational, Hinkley will serve as a live laboratory, attracting high-tech businesses and generating long-term economic value.

Beyond nuclear, we're harnessing the richest natural energy assets in the UK, delivering 15% of the country's green energy needs. By 2035, we will onshore 5.2GW of green-certified energy, positioning the South West as a global hub for renewable energy technology and investment.


And that's just one part of our investment portfolio. We're also at the forefront of net zero technologies, ecosystem services and biodiversity net gain, advanced manufacturing, defence, aerospace, critical minerals and battery supply chains.

No other part of the UK is better equipped to monetise both the green and blue economies — and we have the projects, partnerships, and people to prove it.

LET'S TALK. LET'S INVEST. LET'S GROW.

This is your opportunity to be part of the UK's most exciting growth story. Read on, be impressed, and most importantly — get in touch. Let's explore how the South West can be a game-changing partner in your next big move.

Tim Jones
Chair, Great South West Internationalisation Board



CONTENTS

- 2 FOREWORD
- 3 WHY THE SOUTH WEST IS GREAT
- 4 A UNIFIED VOICE
- 5 POWERED BY PARTNERSHIP
- 6 INVEST IN THE FUTURE
- 8 A TRACK RECORD OF SUCCESS
- 10 AGRATAS GIGAFACTORY
- 11 HINKLEY POINT C
- 12 WORLD-CLASS ASSETS
- 13 FLOATING OFFSHORE WIND
- 14 DORSET CLEAN ENERGY SUPER CLUSTER
- 16 PLYMOUTH & SOUTH DEVON FREEPORT
- 17 YEOVIL
- 18 GOONHILLY EARTH STATION
- 19 CRITICAL MINERALS
- 20 SPACEPORT CORNWALL
- 21 DORSET INNOVATION PARK
- 22 THE M5 GROWTH CORRIDOR
- 23 EXETER & EAST DEVON ENTERPRISE ZONE
- 24 TALBOT QUARTER
- 25 ASONE PARK
- 26 NORTH DEVON BIOSPHERE
- 27 WEST SOMERSET TIDAL LAGOON

The Great South West is a prime investment destination, offering a powerful combination of economic scale, strategic location, and world-leading expertise in energy, food, and defence security.

With an **£81 billion economy** and **133,000 businesses**, the region is a driving force for UK prosperity.

Home to the **UK's largest naval base**, extensive clean energy projects, and a world-class agri-tech sector, the region plays a **critical role in delivering national food, energy, and defence security**.

Rich in **natural resources**, the South West boasts **abundant solar and wind power potential**, vast **critical mineral reserves**, and world-class maritime assets.

A highly skilled workforce fuels innovation across **marine, defence, advanced manufacturing, and clean energy**.

A vibrant **innovation ecosystem** supports research and development through leading institutions, including **8 world-class universities, and Exeter and Plymouth Science Parks**.

With its strategic infrastructure, proven capability in global markets, and growing government focus, **the Great South West presents an exceptional opportunity for investors seeking high-growth, future-focused industries**.



POWERED BY PARTNERSHIP

A UNIFIED VOICE FOR THE GREAT SOUTH WEST

THE GREAT SOUTH WEST PARTNERSHIP BRINGS TOGETHER BUSINESS, POLITICAL AND CIVIC LEADERS ACROSS **CORNWALL, DEVON, SOMERSET AND DORSET**, WORKING AS ONE TO UNLOCK TRANSFORMATIONAL INVESTMENT AND DRIVE ECONOMIC GROWTH.

Backed by Government, and led by a powerful coalition of public and private sector voices, the Partnership exists to champion the South West's most nationally significant sectors and to ensure that the region plays a central role in the UK's economic future.

BUILT TO DELIVER

The Great South West has a clear mission: to secure more high-quality jobs, unlock investment, and strengthen the region's contribution to UK PLC. It is a vehicle to coordinate regional ambition, align with Govern-

ment priorities, and deliver the large-scale projects, workforce strategies and policy development needed to realise our full economic potential.

We work directly with central Government, global investors, and regional stakeholders to make the South West's case as a centre of national importance — supporting the UK's energy transition, bolstering national security, and driving economic growth.

WHY IT MATTERS

In a changing global landscape, **the Great South West is the UK's region for innovation, security, and sustainable growth.** We provide the strategy and momentum to unlock growth for the region and returns for investors.

This brochure is your gateway to some of the UK's most exciting, future-facing investment opportunities. Behind every project is a committed partnership working to make it happen.

WE INVITE YOU TO BE PART OF THE JOURNEY.

The Great South West's presence at UKREiF 2025 is made possible through the generous support of our Event Partners — organisations that share our ambition for a stronger, greener and more resilient UK economy. Together, we are bringing the region's most nationally significant investment opportunities to market, and demonstrating that the region is ready to work with investors and deliver for the UK.



INVEST IN THE FUTURE



The Great South West is a powerhouse of opportunity, combining strategic assets, cutting-edge technology, a unique innovation ecosystem, and a highly skilled workforce to drive investment into the UK's most critical industries.

With unparalleled potential in clean energy, defence, and creative industries, the region is primed to deliver the Government's growth ambitions while securing a more resilient, sustainable future.

Explore the investment opportunities shaping the future of the UK.

POWERING THE UK'S GROWTH SECTORS

CLEAN ENERGY

The Great South West is leading the UK's clean energy revolution, developing cutting-edge solutions across nuclear, offshore wind, hydrogen, battery production, and critical minerals.

- ✓ **Battery Manufacturing:** The UK's first gigafactory in Somerset and Altilium in Plymouth are transforming the UK's battery supply chain, supporting net-zero transportation and energy storage.
- ✓ **Floating Offshore Wind (FLOW):** The Celtic Sea's 20GW potential is key to the UK's energy transition, with an initial 4.5GW in development by 2035, bringing £1.4bn in GVA and 5,300 jobs.
- ✓ **Nuclear Power:** Hinkley Point C, the UK's largest low-carbon power station, will provide clean energy for six million homes. Opportunities for Small Modular Reactors (SMRs) in the region further reinforce its role in UK energy security.
- ✓ **Fixed Offshore Wind, Onshore Wind, Solar, and Hydrogen:** With 2.1GW of solar and wind capacity already in place, the region is investing in hydrogen and biofuels to support decarbonisation.
- ✓ **Critical Minerals:** The South West is home to the UK's largest reserves of lithium, copper, tin, and tungsten, essential for battery production and clean energy technology.

The Great South West is leading the charge in clean energy innovation, making the region a key driver of the UK's future energy security.

DEFENCE & ADVANCED MANUFACTURING


The Great South West is one of the UK's most significant defence and advanced manufacturing hubs, with a strong focus on marine technology, aerospace, and cybersecurity. The region's defence sector produces £2.8 billion in GVA, with 61,000 people employed in defence-related jobs.

- ✓ **Naval & Maritime Defence:** The region is home to Devonport, Europe's largest naval base, and a growing hub for marine autonomy and cybersecurity.
- ✓ **Aerospace & Aviation:** The South West is home to the largest aerospace cluster in the UK, which includes Leonardo UK in Yeovil, a world leader in helicopter production, and major aerospace activity at Bournemouth, Cornwall, and Exeter Airports.
- ✓ **Electronics & Photonics:** The EPIC Centre in Torbay supports cutting-edge developments in quantum technologies, 5G/6G, and next-gen semiconductors.
- ✓ **Space & Satellite Technology:** Goonhilly Earth Station and Spaceport Cornwall are driving the UK's commercial space sector, specialising in satellite communications and space hardware production.
- ✓ **Autonomy:** The region is home to unique test and demonstration sites for drones and maritime autonomy.

CREATIVE INDUSTRIES

The South West is a hotbed of digital innovation, blending cutting-edge technology with creative expertise to drive growth across immersive media, film, and gaming.

- ✓ **Creative Universities:** The region is home to four universities specialising in the arts and creative industries — including the UK's highest-ranked arts university.
- ✓ **Immersive Tech & Digital Design:** The region is pioneering AR/VR technologies, animation, and interactive media, supported by a highly skilled workforce and research-led universities.
- ✓ **Gaming & Interactive Media:** With a thriving indie game development scene, the region is fast becoming a major player in the interactive entertainment industry.
- ✓ **Film & Content Production:** The South West has a strong track record in film, TV production, and content creation, attracting global production companies with its talent and locations.

An aerial photograph of a large industrial complex, likely a gigafactory, featuring extensive solar panel arrays on the roof of a long building. The complex is situated in a rural area with green fields and a small town visible in the foreground. The sky is clear and blue.

A TRACK RECORD OF SUCCESS: WHERE AMBITION BECOMES REALITY

The Great South West has a proven track record of delivering nationally significant infrastructure projects that drive economic growth, innovation, and the UK's transition to net zero. From Hinkley Point C — Europe's largest low-carbon energy project — to the Agratas gigafactory, the region has demonstrated its ability to support and sustain major investments. With world-class supply chains, cutting-edge research, and a skilled workforce, the South West is primed to deliver the next generation of transformative projects that will power the UK's future economy.



AGRATAS GIGAFACTORY

[AGRATAS.NET/BRIDGWATER-PAGE](https://www.agratas.net/bridgwater-page)

With the potential to supply over 50% of projected demand for battery-grade lithium, the Great South West is driving the UK's battery manufacturing industry and is pioneering battery storage projects.

Part of the Tata Group, the Agratas gigafactory, being built at the Gravity Smart Campus in Somerset, will be the first major project in the development of a world-class battery technology cluster in the Great South West that will leverage wider investment to utilise battery technologies in the power sector, EVs and trans-

port, industrial applications and for domestic and commercial use.

The £4 billion Agratas gigafactory will contribute almost half the projected battery cell manufacturing capacity required for the UK automotive sector by 2030 and create up to 4,000 green-collar jobs.



Agratas will:

Meet almost half the battery cell demand of the UK automotive sector.

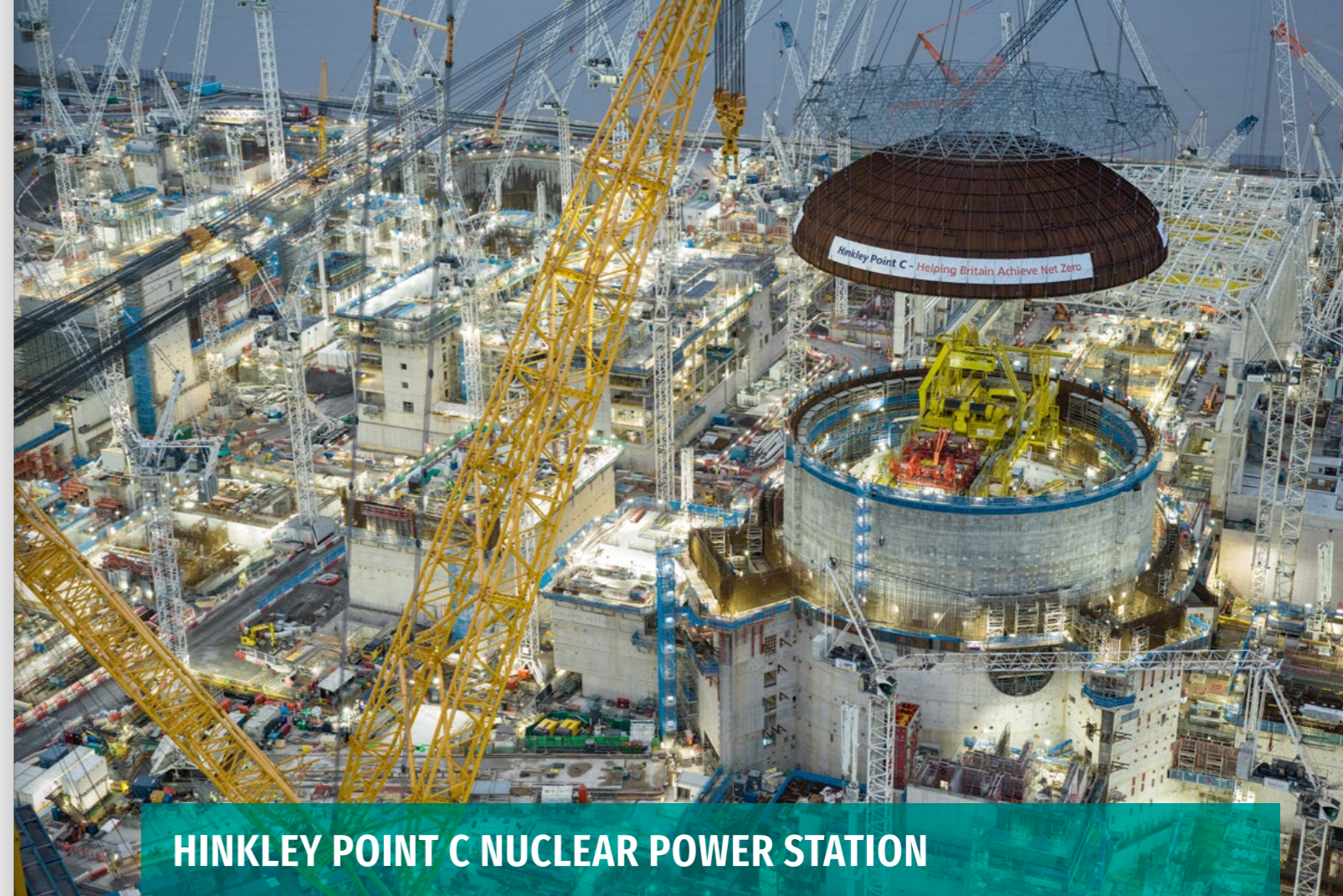
Become one of the biggest gigafactories in Europe.

Help catalyse the formation of a cutting-edge battery industrial cluster with scope to support the decarbonisation of automotive, aerospace and agriculture industries in the UK and abroad.

THE GREAT SOUTH WEST OFFER

Integrated regional planning to optimise the Great South West's energy assets, combining battery storage and hydrogen production with renewable energy generation, and using local lithium within battery manufacturing.

Early-mover advantage to establish a worldclass battery technology cluster, combining local lithium extraction with battery manufacturing and application within the region's transport, aviation and aerospace clusters.



HINKLEY POINT C NUCLEAR POWER STATION

[EDFENERGY.COM/ENERGY/NUCLEAR-NEW-BUILD-PROJECTS/HINKLEY-POINT-C](https://www.edfenergy.com/energy/nuclear-new-build-projects/hinkley-point-c)

The Great South West has proven it can support the construction of large-scale, mission-critical projects through Hinkley Point C in Somerset, the largest and most complex energy engineering project in the UK. When operational, it will power more than 6 million homes for the next 60 years.

Hinkley Point C has acted as a catalyst for regional growth and development, employing 22,000 skilled workers and 3,700 specialist businesses across the UK, with a third of the workforce being locally based, and investing £5.3 billion in Great South West companies. It has created a legacy of skills, expertise and supply-chain capability that will be invaluable for tomorrow's nuclear workforce, as well as in the wider clean energy transition.

It has also been the catalyst for wider investment in the region, from road and rail infrastructure to training facilities and innovation centres. Working with international energy company EDF and National Grid enabled the connectivity required for

Hinkley Point. Somerset Council was able to unlock further grid connection opportunities and attract investment to support large-scale nationally important infrastructure projects, such as the Agratas gigafactory in Somerset.

THE GREAT SOUTH WEST OFFER

Home to Hinkley Point C, which will generate 3.2 GW of low-carbon power and supply 7% of the UK's current electricity demand.

Licensed sites at Hinkley A and B and Winfrith have over 1,000 acres that could be repurposed for new

nuclear, small modular reactor and fusion technology development.

More than 180 nuclear companies and organisations, alongside Nuclear South West and the National College for Nuclear, positioning the region as a centre of excellence.

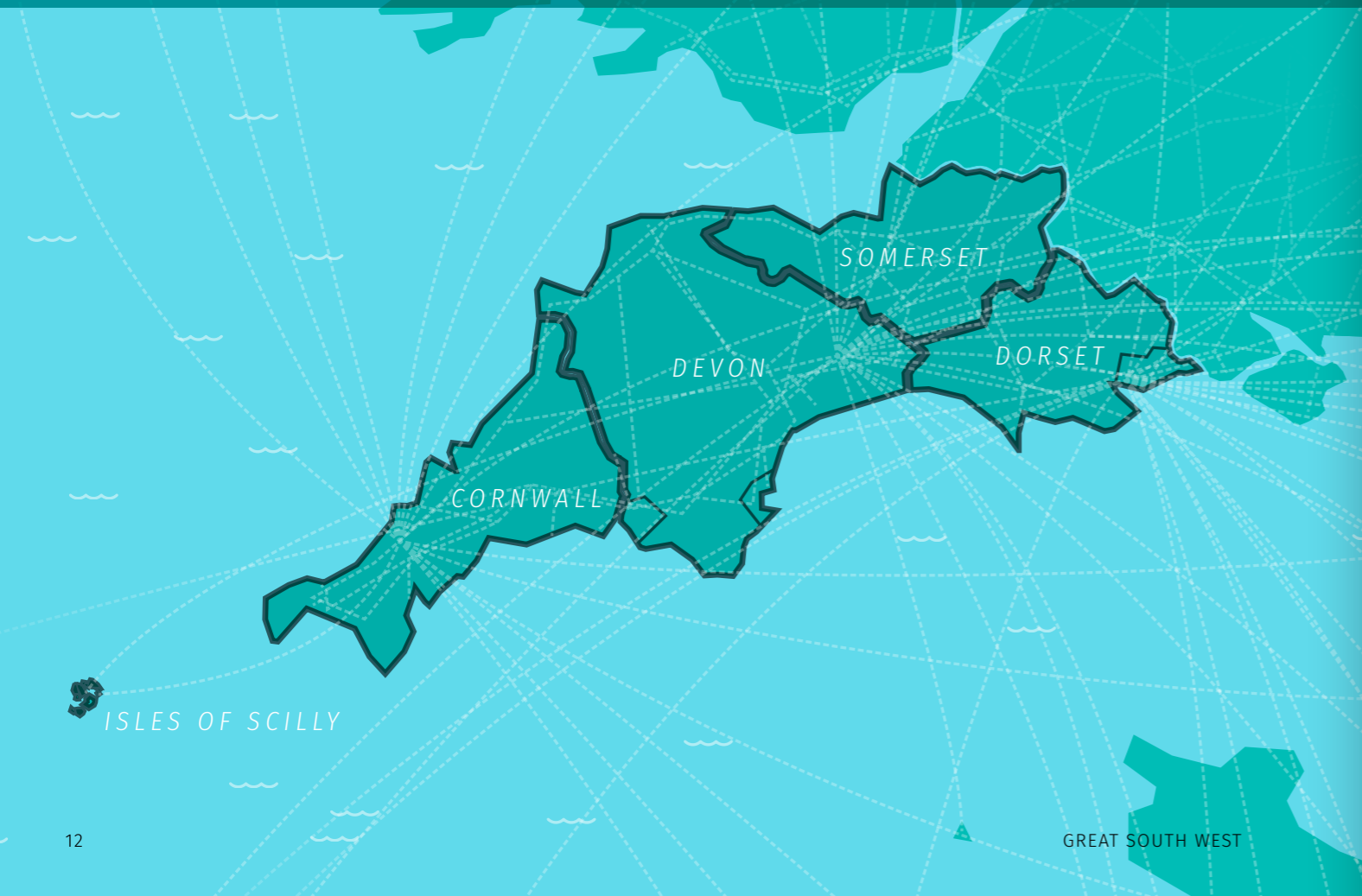
A highly skilled, locally based workforce, supported through the creation of three new Centres of Excellence (Mechanical, Welding and Electrical) in Somerset as part of Hinkley Point C, equipped to deliver the next generation of net zero projects, including floating offshore wind in the Celtic Sea.

Domestic lithium and tungsten extraction and production that will be integral components supporting the commercialisation of fusion power.

£1.8 billion nuclear defence programme at Devonport further establishing the region's nuclear expertise.

WORLD CLASS ASSETS

The following pages showcase some of the most compelling investment opportunities in the Great South West. These projects represent the region's ambition, innovation, and ability to deliver large-scale developments that drive economic growth and national priorities. From clean energy and advanced manufacturing to space technology and marine innovation, each opportunity offers investors the chance to be part of a thriving, future-focused economy with strong supply chains, world-class talent, and a proven track record of success.



HARNESSING THE POTENTIAL OF THE CELTIC SEA

CORNWALLTI.COM INFO@CORNWALLTI.COM

The Great South West is at the forefront of the UK's clean energy transition, unlocking the vast renewable potential of the Celtic Sea.

Floating Offshore Wind (FLOW) in the Celtic Sea presents a once-in-a-generation investment opportunity, which will drive economic growth, create thousands of high-value jobs, and contribute significantly to the UK's net zero ambitions whilst enhancing the UK's global credentials for clean energy.

AN UNRIVALLED OPPORTUNITY FOR CLEAN ENERGY INVESTMENT

The Crown Estate has begun leasing 4.5GW of FLOW in the Celtic Sea, with a further 12GW planned and the potential to support over 24GW of FLOW capacity:

The first 4.5GW alone is expected to generate £1.4bn GVA and 5,300 jobs across the UK.

The full 24GW build-out could bring £16.7bn GVA and over 26,000 jobs, catalysing regeneration and prosperity in coastal communities.

Test and demonstration projects, including the 100MW White Cross (North Devon) and 32MW TwinHub (Cornwall), are already paving the way, providing early contract opportunities and establishing the South West as the UK's hub for FLOW innovation.

A REGION POWERING A CLEAN ENERGY FUTURE

With a significant track record of delivering large-scale infrastructure projects such as Hinkley Point C, coupled with an established maritime cluster, the Great South West is uniquely placed to maximise the opportunities arising from FLOW:

Port infrastructure: The region's ports — including Falmouth, Plym-

outh, Portland, and Appledore — are primed to play key roles in manufacturing, assembly, operations, and maintenance.

Advanced manufacturing & supply chain: The region is home to high-value manufacturing expertise in steel and concrete structures, honed through nuclear construction and shipbuilding, and now ready to support offshore wind.

World-leading research & innovation: The universities of Plymouth and Exeter lead in offshore renewable energy research, with cutting-edge facilities and a strong track record in maritime technology innovation.

With its unparalleled natural resources, world-class expertise, and government backing, the Great South West is well-positioned to be the UK's premier location for Floating Offshore Wind, offering investors and industry partners a unique opportunity to shape the country's clean energy future.



DORSET CLEAN ENERGY SUPER CLUSTER: ACCELERATING GREEN GROWTH & STRENGTHENING UK ENERGY SECURITY

[INVESTINDORSET.COM/CONTACT-US](https://www.investindorset.com/contact-us)

The Dorset Clean Energy Super Cluster (DCESC) is directly focussed on the Government missions of Growth and Clean Power in order to deliver the UK Industrial Strategy. By advancing Nationally Significant Infrastructure Projects (NSIPs) and creating the conditions to welcome and unlock up to £28 billion of investment, Dorset will help Britain towards becoming a clean energy superpower by advancing clean power by 2030 and accelerating towards net zero.

A green growth revolution is underway which positions Dorset as a new UK destination for international investment in clean energy; kickstarting and driving growth to unlock investment, job creation and supply chain opportunities.

Collaboration is the foundation for strengthening UK energy security in the Great South West. The development of a Clean Energy Super Cluster in Dorset fosters strong partnerships across industry, regulators and government to align processes, accelerate delivery and create real growth and benefits to the local community.

RE-ENERGISING THE UK

Dorset presents multiple opportunities to advance NSIPs by harnessing its unique geography and geology, whilst leveraging the existing deep-water port at Portland. With an estimated investment level across all projects of £28 billion — this will drive and deliver green growth and clean power. This accelerates progress towards delivering Government ambitions set out in Invest 2035 and its commitments to clean power by 2030 and Net Zero by 2047.

Opportunities centred around the central hub of Portland Port in Dorset, include:

Offshore Wind in the English Channel

A deepwater, offshore wind hub to construct and service the renewable sector

Carbon dioxide (CO₂) capture and storage (CCS)

Clean hydrogen storage

Nuclear Small Modular Reactors (SMRs) at Dorset Innovation Park, formally known as Winfrith

Related opportunities such as grid improvements, green hydrogen production and import, floating solar and desalination and data.

A Clean Energy Super Cluster, hosted at the Portland Port hub in Dorset will re-energise the UK by:

Facilitating 2GW of offshore wind, helping to power over 3 million households

Creating a 40-60ha deepwater hub port for offshore wind servicing

Abating and locking away up to a gigatonne of CO₂ to reduce the pace of global warming

Providing for up to one billion standard m³ (bcm) of hydrogen storage as an alternative clean fuel

Boosting nuclear power baseload to kick start clean growth sectors

Generating an estimated development and construction expenditure of £17.2 billion

Creating a UK GVA boost of £5.4 billion (including supply chain and wage effects)

Supporting approximately 20,000 construction jobs in the UK

A predicted GVA uplift in Dorset of circa £700m with supply chain and wage effects

Delivering a predicted 1,200 direct full time equivalent (FTE) jobs in operational stages, generating a further £75m per annum over 25 years, rising to 1,600 FTE and £100m GVA per year with supply chain and wage effects included.

Historically, Dorset has played a significant role in the UK's energy production, with Winfrith Atomic Energy Establishment from the 1950's and the development of Wytch Farm in the 1960's as the largest onshore oil field in Western Europe.

Dorset is now poised to play a vital, strategically significant delivery role in decarbonising the UK, advancing UK energy security and green growth.

This transition towards a sustainable, clean energy, growth economy creates the opportunity for significant investment enabling the re-purposing of nuclear and naval sites; plus a new era of training, job creation and business growth opportunities to re-energise economic and community wellbeing for both Dorset, the UK and beyond.



PLYMOUTH AND SOUTH DEVON FREEPORT: THE HEART OF THE UK'S MARITIME FUTURE

PASDFREEPORT.COM EIFION.JONES@PASDFREEPORT.COM

The Plymouth and South Devon Freeport is a nationally significant hub for trade and investment, offering unparalleled opportunities for businesses in defence, marine, advanced manufacturing, net zero technologies, and space.

With a robust defence ecosystem and a thriving marine sector, anchored by the largest naval base in Western Europe at Devonport, the Freeport is primed to support high-growth industries, drive innovation, and attract global investment.

88 HECTARES OF PRIME DEVELOPMENT LAND

The Freeport spans 88 hectares across three prime development sites:

South Yard — Situated at the heart of the UK's maritime innovation cluster, offering unique access to deep-water facilities and a growing ecosystem of marine autonomy and defence innovation.

Langage — A cutting-edge site for advanced manufacturing and energy innovation, strategically located near Plymouth and connected to major transport links.

Sherford — A dynamic mixed-use site providing commercial and industrial space, supporting the expansion of high-tech sectors.

POWERFUL BUSINESS INCENTIVES

The Freeport offers a highly competitive environment with:

Five years of 100% business rates relief — Maximising returns for property owners by reducing overheads for tenants.

Full Stamp Duty Land Tax relief — Lowering acquisition costs for property investors purchasing within the Freeport.

Enhanced capital allowances — Enabling cost-efficient investment in infrastructure, plant, and equipment, increasing asset value.

Streamlined customs arrangements — Reducing costs and delays for businesses trading internationally, enhancing demand for Freeport space.

Three years of employer National Insurance contributions relief — A major incentive for occupiers, strengthening the region's attractiveness to high-growth businesses.

ANCHORED BY INDUSTRY LEADERS

Existing tenants and partners at the Freeport include major industry leaders such as Babcock International,

Princess Yachts, MSubs Ltd., Carlton Power, and the University of Plymouth. These organisations are shaping the future of clean maritime technologies, defence innovation, and net zero energy solutions.

THE UK'S LEADING MARINE AUTONOMY TESTBED

Plymouth is home to Smart Sound Plymouth, the UK's premier testing ground for marine autonomy and advanced maritime technology, offering over 1,000 km² of diverse testing waters. The city also hosts the Future Autonomous at Sea Technologies (FAST) cluster, bringing together over 50 businesses, research institutions, and industry leaders to drive the future of maritime autonomy.

WORLD-CLASS TALENT AND RESEARCH COLLABORATION

The Freeport also benefits from close collaboration with world-class universities such as the University of Plymouth and the University of Exeter, as well as a network of colleges delivering bespoke skills programmes to meet the needs of high-tech industries. With a strong track record of industry-led workforce development, businesses investing in the Freeport can tap into a highly skilled talent pool, ensuring long-term growth and competitiveness.

Backed by over £50 million in public sector funding, the Freeport is developing new, ready-to-occupy commercial units for businesses, with first-phase completions expected by the end of 2025. Plans are also in place to establish a dedicated innovation and collaboration facility at South Yard, supporting the fast-growing marine autonomy sector and positioning the region at the forefront of the blue economy.

The Plymouth and South Devon Freeport represents a strategic opportunity to drive economic growth, innovation, and regeneration, positioning the region as a dynamic hub for trade and investment in the years to come.



YEOVIL: THE FUTURE OF AEROSPACE INNOVATION

IAEROCENTRE.CO.UK / SWFFIZ.CO.UK ENQUIRIES@INVESTSOMERSET.CO.UK

Yeovil is at the heart of the South West's world-class aerospace and advanced manufacturing sector, offering an unparalleled opportunity for investors looking to be part of the future of aviation, autonomy, and next-generation flight technologies.

With a rich heritage in aerospace engineering and a growing innovation ecosystem, Yeovil is home to Leonardo UK — the Home of British Helicopters — and the cutting-edge iAero Innovation Centre, where businesses at all stages of growth can collaborate and scale breakthrough technologies in aerospace, defence, and uncrewed air systems.

IAERO: A HUB FOR AEROSPACE INNOVATION

Located alongside Leonardo UK, iAero provides an agile environment where start-ups, SMEs, global manufacturers, and research organisations can work together in an innovation space designed to remove the barriers of traditional industrial operations. Investors will find a prime opportunity to back companies pioneering in future flight, alternative fuels, and autonomous systems, supported by world-class expertise and access to an advanced testing and development ecosystem.

A PRIME LOCATION FOR GROWTH

Yeovil's strategic location along the South West's A303/A30 growth corridor connects businesses to key UK markets, while its innovation infrastructure is expanding to meet the UK's industrial growth priorities. This includes:

Bunford Park — a 40-acre site allocated for employment growth and ready for aerospace, defence, and engineering businesses.

Yeovil Innovation Centre — a thriving workspace supporting high-tech businesses with office and R&D facilities.

A CONNECTED INNOVATION NETWORK

Yeovil's aerospace ecosystem extends beyond its borders, linking into a regional network of innovation clusters, providing investors with high-growth opportunities across multiple emerging sectors:

Advanced Digital Technologies — Taunton's Firepool Centre for Digital Innovation.

Clean Energy & Nuclear — Somerset Energy Innovation Centre, Bridgewater.

Photonics & Quantum Technologies — EPIC in Torbay, home to cutting-edge developments in optics and photonics.

FUTURE FLIGHT & AUTONOMOUS SYSTEMS

Yeovil is a key part of the South West Future Flight Innovation Zone (FFIZ), supporting the development, testing, and commercialisation of advanced air mobility solutions, alternative aviation fuels, and autonomous aircraft systems. This places the region at the forefront of the UK's drive for sustainable, next-generation aerospace technologies, opening significant opportunities for investment in a sector experiencing rapid global expansion.

INVEST IN THE FUTURE OF AEROSPACE

With a strong industry presence, dedicated employment growth sites, and a thriving innovation ecosystem, Yeovil is primed for investment. Whether in advanced manufacturing, digital flight technologies, or aerospace R&D, the region presents a compelling opportunity to be part of the future of aviation.



INVEST IN A WORLD-LEADING SPACE AND COMMUNICATIONS HUB AT GOONHILLY EARTH STATION

GOONHILLY.ORG SALES@GOONHILLY.ORG

Goonhilly Earth Station Ltd, owners of Goonhilly Earth Station — the iconic global space communications site — present a unique commercial redevelopment opportunity on Cornwall's Lizard Peninsula. With a 6.7-acre self-contained development zone, this is a rare chance to connect with the UK's rapidly expanding space industry, in a secure, high-profile location.

A HISTORIC SITE AT THE FOREFRONT OF SPACE INNOVATION

For over 60 years, Goonhilly Earth Station has been a global leader in satellite and space communications, and today it provides vital support to major international space agencies, commercial satellite and spacecraft operators, and defence and security organisations. A multi-million-pound investment in 2018 has transformed the site into a cutting-edge space communications hub, making it an ideal destination for future-forward businesses looking to capitalise on the region's thriving space and technology sector.

The securely contained 6.7-acre site, with independent access from the wider 158-acre Goonhilly Earth Station, offers significant commercial potential for:

Education and Research Facilities — Extensions to education campuses or dedicated research hubs.

Visitor and Conference Centres — Showcasing the region's space heritage and thriving business ecosystem.

High-Tech Business and Innovation Spaces — Supporting commercial satellite operations and secure data processing.

Hospitality and Accommodation — Capitalising on Cornwall's visitor economy and demand for unique destinations.

ENTERPRISE ZONE BENEFITS & EXISTING INFRASTRUCTURE

Located within the Goonhilly Enterprise Zone, the site offers attractive business rates relief and benefits from existing infrastructure, including:

A ~1,300m² two-storey building, formerly a visitor centre.

High-speed connectivity, with options to utilise Goonhilly's secure data centre.

Opportunities to access Goonhilly's 340kVA solar power farm and nearby, separately-owned wind energy sources.

Established road access, secure perimeter fencing, and an on-site car park.

STEEPED IN HERITAGE & GLOBAL APPEAL

Goonhilly Earth Station's renowned status and unique landscape have attracted global attention from investors, researchers, and media, with the 6.7-acre site-for-development having previously hosted large-scale events, TV and film productions, and music and science festivals. Its retired 26m satellite antenna, 'Arthur', remains an iconic landmark, offering a one-of-a-kind setting for future developments.

JOIN THE FUTURE OF SPACE COMMUNICATIONS

As one of the UK's most unique commercial opportunities, the Goonhilly redevelopment is expected to be strongly supported by regional stakeholders. Goonhilly Earth Station Ltd is seeking forward-thinking investors and development partners to bring their vision to life in this globally recognised space hub.



POWERING THE FUTURE: THE SOUTH WEST'S CRITICAL MINERALS REVOLUTION

INFO@GREATSOUTHWEST.CO.UK

The Great South West offers the unrivalled opportunity to be at the forefront of a new industrial era, unlocking the vast potential of the region's critical minerals sector and battery manufacturing to drive the UK's clean energy transition and industrial resilience.

With globally significant deposits of lithium, tungsten, tin, and other essential minerals, the region presents a unique opportunity for investors looking to capitalise on the booming demand for battery production, renewable energy, and high-tech manufacturing.

CORNWALL: THE UK'S CRITICAL MINERALS HUB

Cornwall is emerging as the UK's leading centre for critical mineral extraction, with pioneering companies such as Cornish Lithium and Imerys British Lithium spearheading efforts to produce battery-grade lithium. Cornwall's lithium reserves are projected to meet up to half of the UK's lithium demand by 2030, offering a secure domestic supply for the electric vehicle and energy storage markets.

Alongside lithium, Cornwall's rich deposits of tin, copper, and tungsten — historically integral to global mining — are seeing a resurgence, driven by increasing demand for renewable

energy technologies and electronics. Cornwall Resources Limited and Cornish Metals are revitalising tin and copper extraction, while Tungsten West is bringing the Hemerdon mine in Devon — home to one of the world's largest tungsten reserves — back into full-scale production.

A FULLY INTEGRATED BATTERY SUPPLY CHAIN

The South West is not only home to mineral extraction but also a growing ecosystem supporting battery production and energy storage solutions. Altilium, based in Plymouth, is leading the way in battery recycling and sustainable refining processes, ensuring the UK maximises the value of its critical raw materials. Agratas's £4 billion gigafactory at Gravity in Somerset will be a major catalyst for the UK's battery manufacturing industry, producing nearly half of the country's required battery cells by 2030.

This integrated approach, from mineral extraction in Cornwall and Devon to battery recycling and manufacturing in Plymouth and Somerset, positions the South West as

a powerhouse of the full battery value chain, significantly reducing the UK's reliance on overseas imports.

INVESTOR OPPORTUNITIES IN A HIGH-GROWTH MARKET

The UK Government has identified critical minerals as a strategic priority, and the South West is primed for investment into mining infrastructure, processing facilities, and advanced materials innovation. With strong policy backing, including enterprise zones and tax incentives, investors have a prime opportunity to support long-term, high-value projects in a region poised for exponential growth.

Whether through direct investment in extraction projects, property development within critical minerals zones, or supporting infrastructure for processing and transport, the South West offers a high-growth, high-impact opportunity for institutional and infrastructure investors.

The demand for responsibly sourced, UK-based critical minerals has never been higher. The Great South West is leading the charge, offering not only a secure domestic supply but also a world-class innovation ecosystem that will fuel the next generation of clean energy and advanced manufacturing.



SPACEPORT CORNWALL: A LAUNCHPAD FOR INNOVATION AND INVESTMENT IN THE SPACE SECTOR

🌐 SPACEPORTCORNWALL.COM / CORNWALLAIRPORTNEWQUAY.COM ✉️ ROSS.HULBERT@SPACEPORTCORNWALL.COM

Spaceport Cornwall is the UK's first licenced spaceport, and delivered the UK's historic first launch from UK soil in 2023. Onsite facilities such as the Space Systems Integration Facility and Space Systems Operations Facility, support a vibrant year-round business ecosystem that encourages R&D and attracts space enabled companies and related enterprise.

ENABLING THE UK'S NEXT TECHNOLOGY REVOLUTION

UK geography offers access to valuable polar and sun-synchronous orbits, forecast to create a £10bn global launch opportunity over the next 10 years. As Europe's leading horizontal launch solution, Spaceport Cornwall has the infrastructure and regulatory environment to support a range of Future Air and Space operators.

The UK space sector is thriving with income of £17.5 billion in 2020/21, up from £16.6 billion in 2019/20. The largest segment is Space Applications with 75% of total income, and 17.78% of UK GDP is dependent on satellite services.*

Spaceport Cornwall is a catalyst for economic growth, creating jobs, attracting investment, and driving innovation in the region's pioneering space sector. Furthermore, the spaceport's proximity to Cornwall's thriving aerospace industry, and world-class research institutions, creates opportunities for collaboration and knowledge exchange, further enhancing its

appeal as a national hub for space-related activities.

Companies currently based at Spaceport Cornwall include, Avanti Communications, Piran Technology Group, Slingshot Aerospace, Space AM, Intelligent AI, Halo Communications, Space Professionals, DronePrep, ESL Defence & Space, Blue Abyss, and Cornwall Space Cluster.

Spaceport Cornwall is part of Cornwall Airport Newquay, one of the fastest

growing regional airports in the UK, offering a completely unique investment opportunity being simultaneously a commercial passenger airport, licenced aerodrome, and spaceport.

UNPARALLELED INVESTMENT OPPORTUNITIES IN AEROSPACE AND SPACE TECH

The combined site is over 350 hectares offering airside and landside development opportunities, including an Enterprise Zone and Business Park. Space is available for large format logistics warehouses, offices and advanced manufacturing facilities alongside state-of-the-industry research & development studios. The combined site has the potential to contribute to an exciting and region defining future.

*Source: Size & Health of the UK Space Industry 2022



DORSET INNOVATION PARK: STRATEGIC INVESTMENT IN THE HEART OF THE UK'S DEFENCE AND SECURITY SECTOR

🌐 DORSETLEP.CO.UK/DORSET-INNOVATION-PARK ✉️ NICHOLAS.WEBSTER@DORSETCOUNCIL.GOV.UK

With a vision to develop an advanced engineering cluster of excellence for the South West, building on existing strengths in the marine, defence, energy and cyber security sectors and lying at the intersection of the burgeoning South West aerospace, marine, defence and energy clusters, Dorset Innovation Park is a proof point of the strategic partnerships and collaboration seen across the Great South West — which underscore its potential to drive economic growth, innovation, and job creation in the region.

HOME TO LEADING DEFENCE AND ENGINEERING COMPANIES

Dorset Innovation Park boasts a distinguished roster of tenants, including world leaders in defence technology such as BattleLab, Atlas Elektronik and QinetiQ, alongside HM Coastguard, Britlift, and Norco. The region offers a vibrant supply chain supported by key trade associations, access to a highly skilled local workforce, and collaboration opportunities with universities and centres of excellence. The Park's strategic location within a one-hour radius of civil and military centres of excellence further enhances its appeal as a hub for innovation and collaboration across the South West region.

Convening a renowned catalogue of defence technology specialists, Dorset Innovation Park underlines the Great South West's leading defence capabilities and maintains the region's defence prowess. A new management company has been established to provide vision and leadership across

the Park and to drive a community of innovation in the defence and cyber-security sectors. The company brings commercial expertise and innovation to the delivery of the Park.

OVER 20 ACRES OF PRIME DEVELOPMENT LAND

With over 20 acres of developable land still available, the company and Dorset Council are investing in site infrastructure and facilities to ensure the Innovation Park benefits from readily available land supported by the best possible occupier experience.

The local development order segregates the Innovation Park into 10 large plot areas that can be sub-divided into smaller plots starting at 0.5 hectares and benefits from a simplified, 28-day planning process.





M5 GROWTH CORRIDOR: SUPERCHARGING ECONOMIC TRANSFORMATION

GIDEONAMOS.ORG.UK CHARLIE.PULLEN@GIDEONAMOS.ORG.UK

Taunton and Wellington (T&W), at the heart of Somerset and the Great South West, is set to create a step change in economic activity, regenerate key sites and open up a dialogue with the market about strategic investment opportunities on the M5 Growth Corridor.

Building on its 'garden town' status and strong public, health and education sectors, Hinkley Point C and the Gravity Smart Campus / Agratas gigafactory (both served by M5, Junction (J) 23), the priority is to stimulate a new era of commercial growth to establish a diverse, flourishing and resilient economic base. Complementing commercial consents already in place at M5 J24, T&W have a key role to draw investment south into the M5 Growth Corridor from Bristol.

In2West, led by the Office of Gideon Amos MP, is set to 'supercharge' T&W and provide a clear focus on responding to the mission of Growth, to unlock investment, create a pipeline of activity and make a tangible difference to place, sustainability and outcomes for communities and business.

The transformation will ignite international market interest, innovation and collaboration, and drive investment into growth sectors to supercharge the heart of Somerset as a key economic hub in the GSW. The area will welcome new businesses, boosting town centres, driving regeneration, sustaining employment, and opening up new pathways for training and jobs in transformational, future-facing sectors.

A PRIME INVESTMENT DESTINATION IN THE HEART OF SOMERSET

Open for business and ready to engage, collaborate and facilitate investment.

Targeting growth sectors: digital / data, food production/manufacturing / agritech, clean energy, advanced manufacturing, advanced logistics and health.

Offering outstanding education through University Centre Somerset and Bridgwater and Taunton College and diverse, high performing, private and state schools.

Expanding and providing bespoke further and higher education to meet employer needs.

HIGH-GROWTH MARKET OPPORTUNITIES

Advanced logistics — Nexus 25, J25, M5.

Optimising the world-class UK Hydrographic Office to support growth in data/ defence/ clean energy sectors.

Strategic commercial / business park development at Wellington, J26, M5.

Strategic commercial and residential development at J25, M5.

Opening a dialogue with international capital investment funds to align with strategic site release at scale, to rebalance communities and kickstart economic growth.

Engaging with the market on sites outside the Local Plan as potential Local Development Orders, to meet specific market needs.

Regeneration of landmark town centre sites — Debenhams, Tangier Riverside and Gas Works — in Taunton.

Housing and commercial development — Firepool Centre, Taunton.

Student and key worker accommodation in the town centre.

AN UNRIVALLED BUSINESS & LIFESTYLE PROPOSITION

Highly connected: T&W sits at the heart of the region, between Bristol and Exeter — accessible via the M5 and mainline Great Western Railway. London in 99mins: Bristol and Exeter both circa 30mins, by rail.

Exceptional college with complementary state and private school options.

High quality NHS healthcare provision at Musgrove Park Hospital and private hospitals through Nuffield Health.

An array of leisure activities to cater for any workforce and accessibility to the UK's finest surf beaches in under 90 minutes.

Lying between the Quantock and Blackdown Hills National Landscapes on the idyllic River Tone — the Garden Town offers quality of life and a lush countryside as a framework for investment and to support any workforce.

From international cricket, to racing, golf, football, rugby, mountain biking, wild swimming and walking to independent retailers, and world class farm shops, T&W can host any business that is seeking to invest in their future as the best place to live, laugh and thrive.



EXETER & EAST DEVON ENTERPRISE ZONE: A PRIME OPPORTUNITY FOR INSTITUTIONAL AND INFRASTRUCTURE INVESTORS

EEDEZ.COM ENTERPRISEZONE@EASTDEVON.GOV.UK

The Exeter & East Devon Enterprise Zone is a strategic growth hub, unlocking investment in clean energy, logistics, advanced manufacturing, and technology innovation.

Positioned at the heart of the South West's rapidly growing economy, the four-site zone is accelerating low-carbon development and infrastructure expansion, with key incentives for investors looking to capitalise on the UK's clean growth agenda.

FOUR PRIME INVESTMENT LOCATIONS

SKYPARK: A FLAGSHIP BUSINESS PARK

100-acre landscaped development offering large-scale build-to-suit facilities and high-quality flexible units for SMEs.

Onyx Phase 2 development — 35 freehold commercial units for sale.

Adjacent to Exeter Logistics Park, a prime hub for distribution and logistics businesses.

POWER PARK: NEXT-GENERATION INDUSTRIAL & LOGISTICS HUB

8-hectare site adjacent to Exeter Airport, with streamlined planning consent.

Purpose-built for office, industrial, and distribution activities, offering turnkey investment potential.

Strategic location: Direct access to the M5, Exeter Airport, and major UK transport networks, enabling seamless connectivity for trade, logistics, and international business.

Strong market demand: Growth sectors including defence, aerospace, clean energy, logistics, and advanced manufacturing are expanding rapidly, driving increased demand for high-quality commercial space.

Clean energy leadership: A flagship low-carbon investment zone, with the Cranbrook Heat Network and other green energy projects making it a future-proofed destination.

Strong economic fundamentals: Exeter is a top-performing UK city, situated in a region with an £81bn economy, 133,000 businesses, and one of the fastest-growing regional economies.

EXETER SCIENCE PARK: WORLD-CLASS CENTRE FOR INNOVATION & R&D

High-spec laboratory & office space (up to 11,000 sq ft) at J29 of the M5, home to leading STEM businesses.

vocō Zeal Exeter Science Park, IHG's first net zero carbon hotel, offering premium sustainability-focused accommodation.

Direct links to the University of Exeter, a global leader in environmental science and clean energy research.

CRANBROOK: A THRIVING NEW TOWN

A growing urban centre, set to reach 8,000 homes, providing a built-in market for retail, leisure, and commercial investments.

A key community hub in the region's expanding residential and employment base.

INFRASTRUCTURE & CLEAN GROWTH AT SCALE

£6.95m investment in Cranbrook Heat Network, expanding low-carbon energy supply to 4,500 homes and 24,500m² of commercial space.

New Exeter Airport connections, including daily flights to Amsterdam, enhancing international business links.

Strong existing corporate presence, with Amazon, Lidl, DPD, and LiveWest already established in the zone.

The Exeter & East Devon Enterprise Zone is a future-ready destination for institutional and infrastructure investors looking to capitalise on the UK's transition to a green economy.

With strategic connectivity, expanding commercial demand, and a clear pipeline of low-carbon developments, it offers an unrivalled opportunity for long-term, high-value returns.



TALBOT QUARTER: A TRANSFORMATIONAL INNOVATION HUB ON THE SOUTH COAST

TALBOTQUARTER.ORG | SHORDERN@PERPSICIO.CO.UK

Talbot Quarter is set to become one of the UK's most exciting new innovation clusters, capitalising on Bournemouth's strengths in advanced manufacturing, healthcare, digital, and creative industries.

Positioned at the heart of a £350 million regeneration project, this next-generation mixed-use development offers a prime investment opportunity in a high-growth, high-demand location. With a focus on health, wellbeing, and sustainability, Talbot Quarter will be a dynamic ecosystem for future-focused businesses, cutting-edge research, and a thriving talent pipeline.

A PRIME INVESTMENT OPPORTUNITY

The development offers a unique blend of commercial, innovation, and residential space, with significant economic impact:

£97 million GVA per annum to the regional economy.

1,370 net additional full-time jobs, strengthening the local and national workforce.

£48 million in additional earnings per year, driving prosperity and business growth.

STRATEGIC LOCATION & ACCESS TO TALENT

Located in Bournemouth, Talbot Quarter is positioned within a fast-growing regional economy, with excellent connectivity to London, the South West, and international markets via Bournemouth Airport. The site is adjacent to three leading universities — Arts University Bournemouth, Bournemouth University, and Health Sciences University — providing a steady pipeline of highly skilled graduates in AI, MedTech, augmented reality, digital innovation, and creative industries.

A FUTURE-READY INNOVATION DISTRICT

Talbot Quarter has been strategically master-planned to offer a mix of commercial space, R&D facilities, and residential units, ensuring a fully integrated community for businesses and residents alike:

Innovation Hub — A 35,000 sq ft workspace for startups and SMEs, fostering collaboration between academia, business, and industry.

Innovation Park — A 150,000 sq ft hub for offices, labs, and co-working spaces, designed to meet the needs

of next-generation businesses with ESG, PropTech, and Smart City principles embedded from the outset.

Nuffield Health Hospital & Orthopaedic Research Institute — A 125,000 sq ft facility driving medical science innovation, leveraging the region's unique healthcare demographics.

Talbot Place — A vibrant central hub offering flexible workspaces, green spaces, food outlets, and cultural amenities.

Heathland Support Area & Talbot Way — A 30-acre regenerated green space, enhancing sustainability and biodiversity while providing eco-friendly transport links to the town centre.

INVEST IN A THRIVING INNOVATION ECOSYSTEM

With planning permission granted for the Innovation Park and hospital, and the wider Talbot Quarter backed by the Local Plan, this project is ready for investment. Talbot Village Trust is now seeking delivery partners, investors, and occupiers who share the ambition to create a world-class innovation district that bridges business, research, and quality of life.



ASONE PARK — A GAME-CHANGER FOR CORNWALL'S CREATIVE ECONOMY

CINDY@ASONEPERFORM.COM / STUART@ASONEPERFORM.COM

Cornwall is set to become a powerhouse for the digital broadcast and live performance industries, thanks to an ambitious new investment opportunity — ASONE Park.

Located in St Merryn, this 330,000 square-foot business park is designed to provide state-of-the-art facilities for music, film, television, and corporate entertainment industries.

With a vision that merges cutting-edge technology with sustainability, ASONE Park presents a prime investment prospect for private investors, pension funds, and private equity firms.

A PIONEERING HUB FOR THE CREATIVE SECTOR

ASONE Park is more than just a business park; it is a complete ecosystem for the creative industries. The development will include:

Specialist rehearsal spaces for music, theatre, and live performance.

High-tech film, HDTV, and recording studios for broadcast production.

Serviced luxury offices and conference spaces for corporate clients.

On-site venues and logistics support for live events and productions.

High-end accommodation and leisure facilities, including a hotel, members' spa, and corporate catering services.

Equipment hire services featuring plant, lighting, and audio technology.

This all-encompassing infrastructure is set to drive the future of digital media and performance arts in the county and the region, creating a

unique business hub for creative professionals.

A MULTIFACETED INVESTMENT OPPORTUNITY

Investing in ASONE Park provides a rare opportunity to support the region's economic development while ensuring stable financial returns across multiple revenue streams.

FUTUREPROOF INFRASTRUCTURE FOR LONG-TERM RETURNS

Infrastructure investments offer steady, long-term returns, and ASONE Park is no exception. The demand for high-quality broadcast and performance facilities continues to rise, positioning this project as a competitive asset that can generate consistent rental income and capital appreciation.

HIGH GROWTH PRIVATE MARKET ASSETS & PORTFOLIO DIVERSIFICATION

For investors seeking exposure to private market assets, ASONE Park presents an opportunity to diversify portfolios with a specialised property development focused on high-growth industries. With its niche focus, it offers higher potential returns compared to traditional property investments.

WHERE TECHNOLOGY MEETS CREATIVITY

ASONE Park fosters innovation in digital media and live performance. Investors interested in the intersection of entertainment and technology will find this venture highly attractive, with opportunities to support the expansion of high growth companies.

DIVERSE REVENUE STREAMS

Beyond property and facilities, ASONE Park offers additional revenue streams through equipment hire, logistics support, and corporate services. These ancillary services not only strengthen the business park's core offerings but also expand its market reach.

DRIVING ECONOMIC GROWTH & INNOVATION

ASONE Park is not just about financial returns; it's about building a thriving creative hub in Cornwall. The project will create new jobs, support local businesses, and provide a world-class space for digital broadcast and performance professionals to collaborate and grow. This aligns with investment strategies that balance financial gains with meaningful social impact.

INVESTING IN PEOPLE, SKILLS & THE FUTURE

Partnering with leading academic institutions and vocational providers, ASONE Academy will deliver a carousel of flexible, industry-relevant education programs. With short courses, corporate training, and postgraduate certifications tailored to market demand, the academy will ensure a steady pipeline of skilled professionals and contribute to the industry's growth.

ASONE Park is a landmark investment opportunity that blends financial viability with industry expansion and community benefit.

For those looking to be part of a transformative project in the heart of the Great South West, now is the time to act.



NORTH DEVON BIOSPHERE: PIONEERING NATURAL CAPITAL INVESTMENT AT SCALE

[NORTHDEVONBIOSPHERE.ORG.UK](https://www.northdevonbiosphere.org.uk) ROB.JORDAN@DEVON.GOV.UK

As the world transitions toward sustainable finance and nature-based solutions, the North Devon UNESCO Biosphere is positioning itself as a leading testbed for natural capital investment models.

With the rapid development of green energy, biodiversity markets, and ecosystem services, the South West is primed to drive the next wave of economic growth — one that fully integrates rural and coastal communities into the future of sustainable investment.

A HIGH-GROWTH MARKET WITH GLOBAL POTENTIAL

The global natural capital market is projected to be eventually worth \$125 trillion, yet investment at scale remains a challenge due to its early-stage nature and risk-reward balance. The North Devon Biosphere is at the forefront of tackling these challenges by:

Blending public and private finance to de-risk natural capital investments.

Developing scalable investment models that engage multiple landowners across large landscapes.

Deploying cutting-edge data analytics through the Smart Biosphere initiative — a partnership with IGI, a leading data science specialist — to track, verify, and optimise environmental outcomes.

AN INVESTABLE ECOSYSTEM FOR NATURE-BASED SOLUTIONS

Backed by a coalition of 35 organisations within the Biosphere Partnership and over 20 years of trusted collaboration with landowners, North Devon is uniquely placed to deliver high-impact projects. Current investment-ready opportunities include:

Biodiversity Net Gain (BNG) initiatives — Meeting developer offsetting requirements through habitat creation and restoration.

Soil carbon, saltmarsh carbon, and a woodland enterprise zone

— Unlocking long-term carbon sequestration value and other new revenue streams.

Natural flood management — Mitigating climate risk through ecosystem restoration.

Sustainable aquaculture as a natural capital solution — Supporting ocean biodiversity while delivering commercial returns.

A STRATEGIC OPPORTUNITY FOR INVESTORS, DEVELOPERS, AND POLICYMAKERS

Whether you are:

An investor seeking to deploy capital into the fast-growing natural capital asset class

A developer or corporate looking for offset opportunities to meet sustainability targets

A company or university looking to trial new technologies and methodologies

A policymaker exploring nature-positive economic models

The North Devon UNESCO Biosphere is the partner of choice for delivering sustainable, high-value projects at scale.



WEST SOMERSET TIDAL LAGOON: INVEST IN THE FUTURE OF RENEWABLE ENERGY

[WESTSOMERSETLAGOON.COM](https://www.westsomersetlagoon.com) CHRISBINNIE@WESTSOMERSETLAGOON.COM

The West Somerset Tidal Lagoon presents a transformational opportunity for investors to be part of one of the UK's most ambitious renewable energy projects.

Strategically positioned along the Bristol Channel, home to the world's second-highest tidal range, this large-scale tidal range power scheme will play a pivotal role in securing the UK's energy future.

A SCALABLE, PREDICTABLE, LONG-TERM RENEWABLE ENERGY SOURCE

Unlike intermittent wind and solar power, tidal energy is entirely predictable, offering a stable and reliable source of zero-carbon electricity. The West Somerset Tidal Lagoon is designed to:

Power up to 2 million UK homes with clean energy

Operate for 120+ years, ensuring long-term energy security

Generate electricity on both ebb and flood tides, providing a continuous, predictable energy supply

Leverage short-term storage solutions for uninterrupted energy delivery

JOIN THE UK'S CLEAN ENERGY TRANSFORMATION

With the Government committed to expanding renewable capacity and strengthening energy independence, tidal energy is emerging as a high-growth sector. The Bristol Channel's exceptional tidal range makes this location one of the most promising in the UK.



WHY INVEST?

First-mover advantage — Establish a leading position in the UK's emerging tidal energy market

Scalable infrastructure — Designed for replication, this project creates future opportunities for expansion

Fast deployment — The project is designed to start generating power within five years using a repeatable construction method

Stable, long-term returns — A 120+ year operational lifespan provides a low-risk, long-yield energy asset

The West Somerset Tidal Lagoon represents a once-in-a-generation opportunity to invest in sustainable, large-scale energy infrastructure.



Babcock is passionate about breaking down barriers to enable a broader range of people to access long-term careers in defence, and the fantastic training and development that comes with this.

Babcock is committed to driving regional resilience, leading the South West regional hub for nuclear skills, and collaborating with local institutions like City College Plymouth and Plymouth University through initiatives such as the Babcock Skills Academy. These partnerships aim to equip the local workforce with the skills needed for current and future defence projects.

Skills initiatives include pre-apprenticeship programmes that help support more people into apprenticeships, accelerated train to fit programmes that upskill and support people to move into a new sector, employability programmes that provide core training and skills to help people return to work, and the introduction of gamification for onboarding, which employs a video game mechanic that transforms the way Babcock engages new talent.

Babcock has also committed to doubling their early careers intake in line with the National Nuclear Strategic Plan for Skills, with a plan to double their Devonport engineering pre-apprenticeship programme intake later this year.

Introducing the next generation to wide-ranging career choices in STEM continues to be a focus, and in the South West alone, Babcock has carried out STEM engagement activities with more than 2000 young people in local schools in the first quarter of 2025 and engaged 6500 people on early careers in the same period, with a particular focus of breaking down barriers for women and underrepresented communities.

Babcock has a fantastic range of career opportunities that help deliver our nation's critical national defence and energy security programmes.



With a unique blend of an outstanding natural environment, proud heritage and diverse, vibrant communities, Bournemouth, Christchurch and Poole is a fantastic place in which to invest.

Home to more than 400,000 residents, three universities, two hospitals, one Premier League football team, multiple heritage assets including a castle, priory and beautiful wild spaces, international conference centre, an airport, commercial port and robust digital infrastructure, this is an area brimming with prospects and potential.

Businesses recognise this and are investing — from premium restaurants opening in Bournemouth to fintech firms expanding in Poole and a thriving town centre in Christchurch, we are home to more than 15,500 businesses.

The future is exciting. We have several locations ripe for regeneration, including a former power station site in Poole and key locations across Bournemouth.

We are proud of our natural spaces — from 15 miles of south-facing sandy beach and the second largest natural harbour in the world, to 19 Sites of Special Scientific Interest and 2,500 hectares of greenspace. We are working with partners to support nature recovery, reduce our carbon emissions and create places where nature and people can thrive.

At BCP Council we want to make the most of these natural assets to create a place where people, nature, coast and towns come together in sustainable, safe and healthy communities.



A green growth revolution is underway which positions Dorset as a new UK destination for international investment in clean energy. Through place leadership, Dorset is pivoting to enable transformation. Dorset's natural assets and its unique geography and geology together with its deep-water port at Portland make it a prime location in the South of the UK for offshore wind, carbon capture and storage, hydrogen technologies, new nuclear and energy innovation to kick start and drive growth.

Bringing together private sector organisations in collaboration with the public sector, the Dorset Clean Energy Super Cluster (DCESC) is on a mission to create the conditions to welcome and unlock up to £28 billion of investment and align processes to ensure the UK Industrial Strategy can be delivered on the ground.

Focussed on energy transition and energy resilience through the delivery of Nationally Significant Infrastructure Projects in and around Portland Port in Dorset; the DCESC is fostering collaboration across industry, regulators and government. Its mission is to align processes, accelerate delivery, stimulate transformation and create real benefits for the community and UK. With the ultimate goal of powering growth, strengthening UK energy security and resilience by advancing the delivery of clean power by 2030 and Net Zero by 2047.



Dorset's famous natural assets, including its coastline, make it a prime location for offshore wind, tidal energy, solar power and hydrogen technologies. Its commitment to sustainability and support for clean energy businesses makes it a strong location for those looking to develop renewable energy solutions.

We are working collaboratively with the recently formed Dorset Clean Energy Super Cluster which brings together private sector businesses focused on the Government missions of Growth and Clean Power.

With several ready to go projects Dorset will help Britain towards becoming a clean energy superpower by attracting scarce international investment to the UK, stimulating supply chain development and export opportunities through advancing clean power and energy infrastructure delivery.

In addition to this, we are offering a range of investment opportunities at the Dorset Innovation Park, which has Enterprise Zone status and through a strategic, significant regeneration programme based in Weymouth, on the coast and at the heart of England's only natural world heritage site.



As one of the UK's fastest-growing cities, with a youthful and vibrant population, Exeter is driving economic growth for the southwest. Our world class education ecosystem is providing home-grown talent for creative enterprises and established knowledge-based businesses alike.

Exeter is a beautiful and historic city and is the beating heart of Devon. The City Council is investing heavily in transforming Exeter's retail, leisure and cultural offer, including the successful Princesshay and Guildhall shopping centres, our state-of-the-art swimming pool and leisure facility at St Sidwell's Point, and in achieving UNESCO City of Literature status.

We are a welcoming city, and people from all over the UK are choosing to make their lives in Exeter. The world class research in environmental intelligence and climate science at the University of Exeter and Met Office, is attracting talented and committed people from other leading cities, to start up new businesses. At the Exeter Science Park, the South West's centre of activity for businesses in STEMM, we have the space for high-tech businesses to grow and realise their ambitions.

Liveable Exeter is the council's transformational regeneration programme. We are planning to build another 12,000 high quality homes in the city, creating sustainable new neighbourhoods whilst protecting our precious green spaces and Valley Parks.



Exeter Science Park is entering a transformative new phase. Strategically positioned along the south west's innovation corridor, this 70-acre site is home to a thriving ecosystem of over 45 pioneering businesses in sectors including life sciences, digital, engineering, and climate tech.

With 25% of the park already developed and delivering over £50 million in GVA to the regional economy in 2023-24 alone, the momentum is strong—and growing. The recent opening of a £22 million net zero carbon hotel marks a new milestone, enhancing the Park's offer as a premium location for talent, enterprise, and investment.

Now, Exeter Science Park is seeking £150-£200 million in external investment to realise its full vision by 2035. Backed by four public sector shareholders, and with planning set to be simplified through a new Local Development Order, the site presents a compelling opportunity.

On completion, the park will support 3,500 high-value jobs and generate up to £350 million in annual turnover. With its dynamic business community, net zero credentials, and strategic partnerships, Exeter Science Park is primed to become a leading UK innovation hub.

exetersciencepark.co.uk

jbuck@exetersciencepark.co.uk

HEAR FROM OUR EVENT PARTNERS



Dorset, renowned for its picturesque landscapes and vibrant communities, is a hub for business innovation and growth.

Dorset's economy is flourishing, with a Gross Value Added (GVA) of nearly £20 billion. As part of the Great South West, the UK's Natural Powerhouse region, Dorset makes a significant contribution to the South West economy.

Invest in Dorset focuses on several key sectors:

- **Advanced Engineering & Manufacturing:** Leveraging innovative technologies.
- **Agritech & Aquaculture:** Promoting sustainable food production.
- **Defence & Security:** Safeguarding the UK's interests.
- **Digital & Creative:** Enhancing innovation.
- **Financial Services:** Supporting businesses and individuals.
- **Marine & Maritime:** Renowned expertise.
- **Clean Energy:** Addressing global environmental challenges.

Businesses relocating to Dorset benefit from comprehensive support facilitated by the Invest in Dorset Team. The Business Growth Team provides resources, information, and guidance, while the Dorset Ambassador Network promotes the county's strengths.

Invest in Dorset is transforming the county into a vibrant economic hub. Its strategic location within the Great South West region enhances its appeal for business investment.

investindorset.com



Plymouth is entering a period of extraordinary growth, underpinned by one of the UK's largest national infrastructure investments, with £4.4 billion in Government defence commitment pledged to HM Naval Base Devonport and Babcock's Devonport Royal Dockyard over the next ten years. The investment will support the UK's submarine and surface fleet — creating long-term demand for housing, infrastructure, and services across the city.

To respond to this opportunity, the Growth Alliance Plymouth (GAP) — a strategic partnership between Plymouth City Council, Babcock and the Royal Navy — is helping to align infrastructure and planning with city-wide growth. Working closely with Homes England, regeneration plans are progressing across key development areas, with a clear pipeline in place for homes, employment space, skills and sector-specific investment.

At the heart of this is an ambitious programme of city centre regeneration — delivering up to 10,000 new homes, establishing new employment districts, and repurposing landmark sites such as the Civic Centre into a hub for blue and green skills. This work is supported by a new delivery partnership with Homes England.

For investors and developers, Plymouth offers a nationally significant opportunity, with clear leadership, shared ambition, and a city poised for sustainable growth.



Somerset, with its charming market towns and picturesque villages, amidst the stunning landscapes of Exmoor National Park and the Somerset Levels. Somerset is more than just a beautiful place to live—it's a thriving economic hub.

The county is renowned for its advanced manufacturing, clean energy, and aerospace sectors, which drive innovation and productivity. Major projects like the £34 billion Hinkley Point C nuclear power station and the £4 billion Agratas investment at Gravity Enterprise Zone highlight Somerset's role in the UK's low carbon energy revolution. In addition to these strengths Somerset has significant potential for data centre investment, transforming infrastructure to support high performance computing and AI, with the potential to unlock further opportunities to establish AI clustering and a growth zone in the county.

The region's strong sectoral foundations, high employment rates, and significant investment projects create a robust business environment. Somerset's strategic location offers excellent connectivity with major regional hubs across the Great South West as well as Bristol and London, enhancing its appeal for businesses and residents alike.

With a thriving visitor economy, vibrant market towns, and a strong sense of community, Somerset is not just a place to do business but a place to thrive.



Talbot Quarter is Bournemouth's £350 million innovation district delivering a next-generation, mixed-use development. Backed by a long-term charitable landowner, Talbot Village Trust, Talbot Quarter offers a prime investment opportunity in a high-growth, high-demand location.

Anchored by world-class universities, the Quarter creates a dynamic ecosystem for digital, creative, and health-tech industries.

The Innovation Hub delivers 35,000 sq ft of workspace for startups and SMEs, fostering collaboration between academia, business, and industry, while the Innovation Park provides 150,000 sq ft of offices, labs, and co-working spaces, designed to meet the needs of next-generation businesses with ESG, PropTech, and Smart City principles embedded from the outset.

The Nuffield Health Hospital & Orthopaedic Research Institute will be a 125,000 sq ft world-leading facility driving medical science innovation.

The development offers significant economic impact:

- £97 million GVA per annum to the regional economy
- 1,370 net additional full-time jobs, strengthening the local and national workforce
- £48 million in additional earnings per year, driving prosperity and business growth

The residential neighbourhood of the Talbot Quarter is designed with a mixture of modern, quality, accommodation including purpose built student accommodation, build-to-rent, extra care housing, and open market homes.

talbotquarter.org

enquiries@talbotquarter.org

TORBAY COUNCIL

Torbay, home to the vibrant towns of Torquay, Brixham, and Paignton, enjoys a stunning coastal setting along the magnificent Tor Bay, framed by the dramatic landscapes of Dartmoor National Park. Renowned as the English Riviera, attracting visitors from around the world, we are also a thriving hub for globally significant industries. Our cutting-edge businesses in photonics, marine technology, nanotechnology, and MedTech are shaping the future, proving that Torbay is not just a place to visit, but a place to innovate, invest, and grow.

With our UNESCO Global Geopark designation, we are harnessing Torbay's natural and marine environment to attract and retain world-class businesses, forging a dynamic future that balances economic progress with environmental stewardship.

We are committed to building a brighter future for our people and our place—creating an exceptional environment for business, while ensuring that every resident enjoys a high quality of life. We recognise the challenges faced by coastal communities like ours, and we are actively repositioning Torbay for long-term success.

Heritage and culture are at the heart of our transformation. Through strategic partnerships, we are modernising and elevating the visitor experience, ensuring that our legacy is not only preserved but celebrated in bold and exciting ways.



Womble Bond Dickinson: A Strategic Partner for the Great South West

In an increasingly complex world, solving problems requires fresh perspectives. We pride ourselves on being different, bringing together entrepreneurial individuals who challenge conventional wisdom and go beyond business-as-usual to help our clients achieve the best results.

WBD has a long-standing commitment to the Great South West. Our involvement isn't just about providing legal services; we're a strategic partner contributing to the region's success. Our work spans various sectors, including energy, and showcases our expertise and dedication to the region.

Our focus on energy is more than just keeping the lights on. It's about providing solutions to challenges and delivering benefits to our communities and the planet. WBD's been at the forefront of pioneering energy projects, including the UK's first-ever commercial onshore wind farm project at Delabole, Cornwall, the coastal infrastructure leases for the Hinkley Point C power station, The Crown Estate on key lithium exploration projects off the Cornish coast and Plymouth City Council on the roll-out of EV charging points at key sites across the city.

Our expertise spans all sustainable energy segments, and we act for developers, consumers, infrastructure owners, contractors, regulators, funders, public sector bodies, and other stakeholders. Find out how we can support your projects and environmental goals.

womblebonddickinson.com/uk/sectors/energy-and-natural-resources

GREAT BUSINESS GREAT INNOVATION GREAT INVESTMENT


Great South West




 GREATSOUTHWEST.CO.UK

 AHMED GOGA, DIRECTOR

 AHMED.GOGA@GREATSOUTHWEST.CO.UK

 JAMES FAIRBAIN, DEPUTY DIRECTOR

 JAMES.FAIRBAIN@GREATSOUTHWEST.CO.UK